



# #HealthierMO

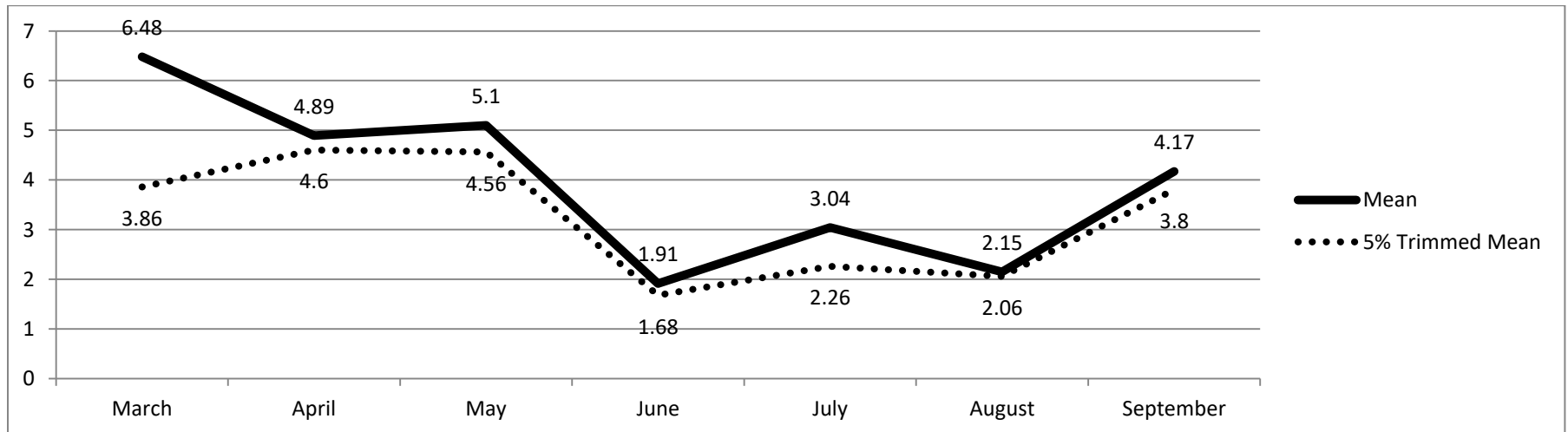
Transforming the Future of Public Health in Missouri

## Volunteer Time Tracking for In-Kind Donations

September 2019

Table 1.  
Four Month History of In-Kind Donations

	June 2019	July 2019	August 2019	September 2019
Respondents	16	14	17	15
Total Hours	31	43	37	63
Mean	1.91	3.04	2.15	4.17
5% Trimmed Mean	1.68	2.26	2.06	3.80
Std. Deviation	2.46	5.15	2.10	4.11
Minimum	0	0	0	0
Maximum	8	20	6	15
Interquartile Range	4	4	4	15



A project of the Missouri Public Health Association with support from Missouri State University.

Funding provided by Missouri Foundation for Health and Health Forward Foundation.

722 E. Capitol Avenue, Jefferson City, MO 65101 \* 573-634-7977

[www.HealthierMO.org](http://www.HealthierMO.org) \* #HealthierMO \* @aHealthierMO

Table 2.  
*Binned Data of In-Kind Hours Donated*

	Frequency	Percent
0 - 3 hours	8	57.1%
4 - 6 hours	4	28.6%
7 - 9 hours	1	7.1%
10 or more hours	1	7.1%
Totals	14	100%

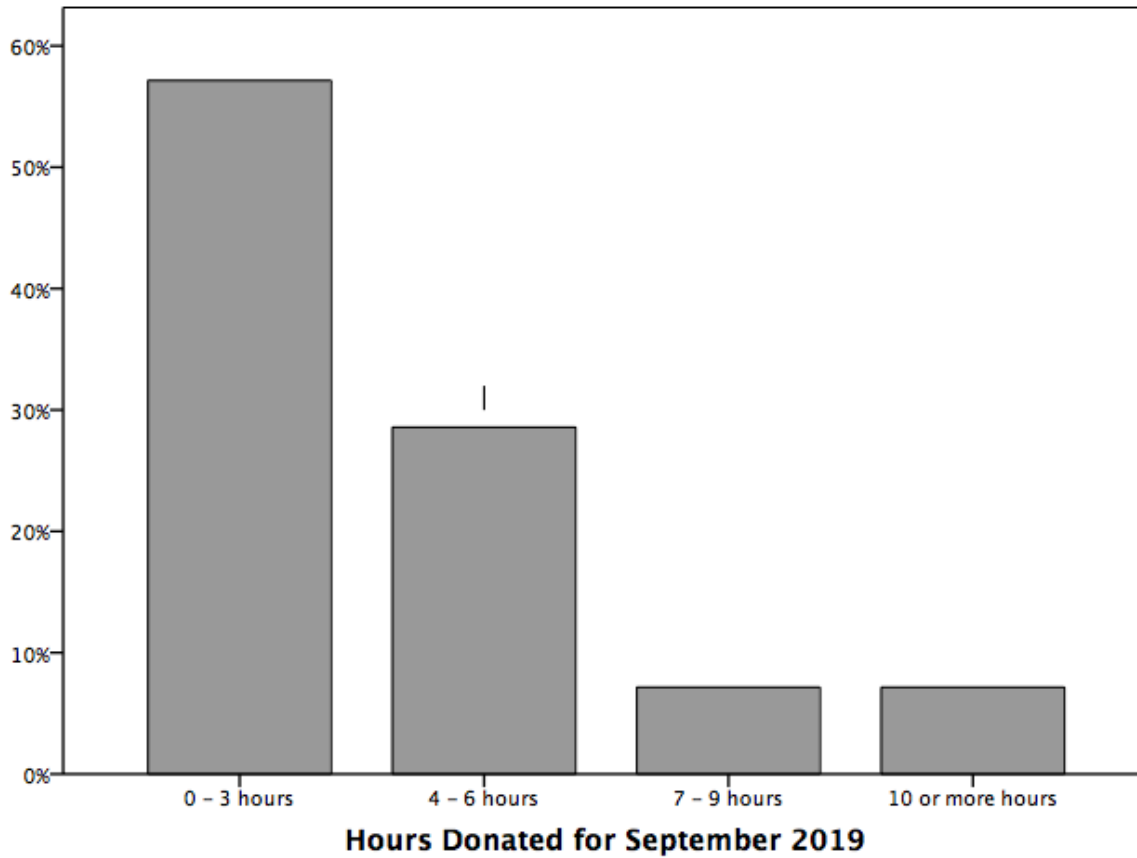


Table 3.  
*In-Kind Hours Donated to Meetings (Not Including Travel)*

Date	Group	Participants	Hours
9/3/19	Professional Org. Meeting	10	4
9/17/19	Advocacy Workgroups	4	1
9/17/19	Collaborating Work Group	4	1
9/30/19	FPHS Focus Groups	67	3

---

<b>TOTAL</b>	<b>249</b>
--------------	------------

---

Table 4.  
*In-Kind Hours Donated for September 2019*

Source	Hours	Value
Meeting time	249	\$8,978.94
In-kind donated hours	63	\$2,271.78
Travel Time	100.5	\$3,624.03
Venue costs		\$200.00
<b>TOTAL</b>	<b>412.5</b>	<b>\$15,074.75</b>

**September 2019**  
Total Hours: 412.5  
Total Value; \$15,074.75