



#HealthierMO

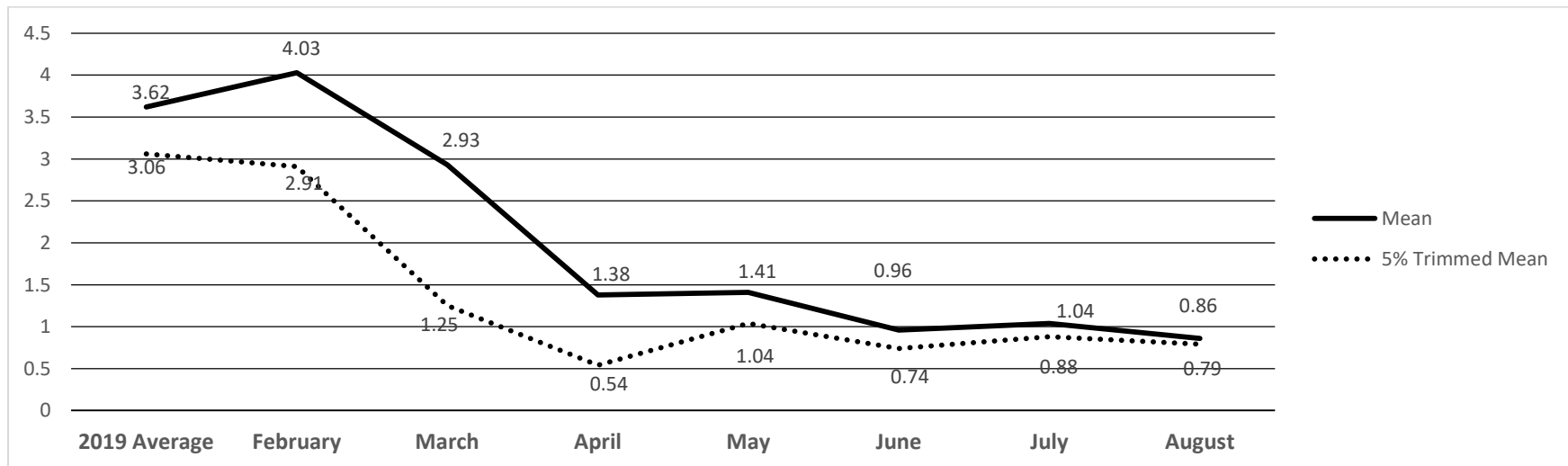
Transforming the Future of Public Health in Missouri

Volunteer Time Tracking for In-Kind Donations

August 2020

Table 1.
Four Month History of In-Kind Donations for Activities

	April 2020	May 2020	June 2020	July 2020	August 2020
Respondents	17	23	13	19	20
Total Hours	24	34	13	20	17
Mean	1.38	1.41	.96	1.04	.86
5% Trimmed Mean	.54	1.04	.74	.88	.79
Std. Deviation	4.32	2.54	1.75	1.55	.992
Minimum	0	0	0	0	0
Maximum	18	10	6	5	3
Interquartile Range	1	2	1	1	2



A project of the Missouri Public Health Association with support from Missouri State University.

Funding provided by Missouri Foundation for Health and Health Forward Foundation.

722 E. Capitol Avenue, Jefferson City, MO 65101 * 573-634-7977

www.HealthierMO.org * #HealthierMO * @aHealthierMO

Table 2.

Binned Data of In-Kind Hours Donated

	Frequency	Percent
0 - 3 hours	20	100%
Totals	20	100%

Graph 1.



Table 3.

In-Kind Hours Donated to #HealthierMO (Not Including Travel)

Date	Group	Participants	Hours	Total Hrs.	Value
	Total from <i>In-Kind Meetings</i>			0	0
	Total from <i>In-Kind Activities</i>			17	613.20
	Program Development				1000.00
	TOTAL			17	1613.20

Note. Travel hours are not included because they are reimbursed by the grant.

2020 YTD (6 Months)
Hours: 346
Value: \$13,512.56

August 2020
Total Hours: 17
Total Value: \$1613.20

Note 1. Due to local, state and federal social distancing regulations designed to prevent the spread of COVID-19, meetings could not be held for the month of **August**.

Note 2. Program development is estimated at 50 hours for a value of \$20 per hour.