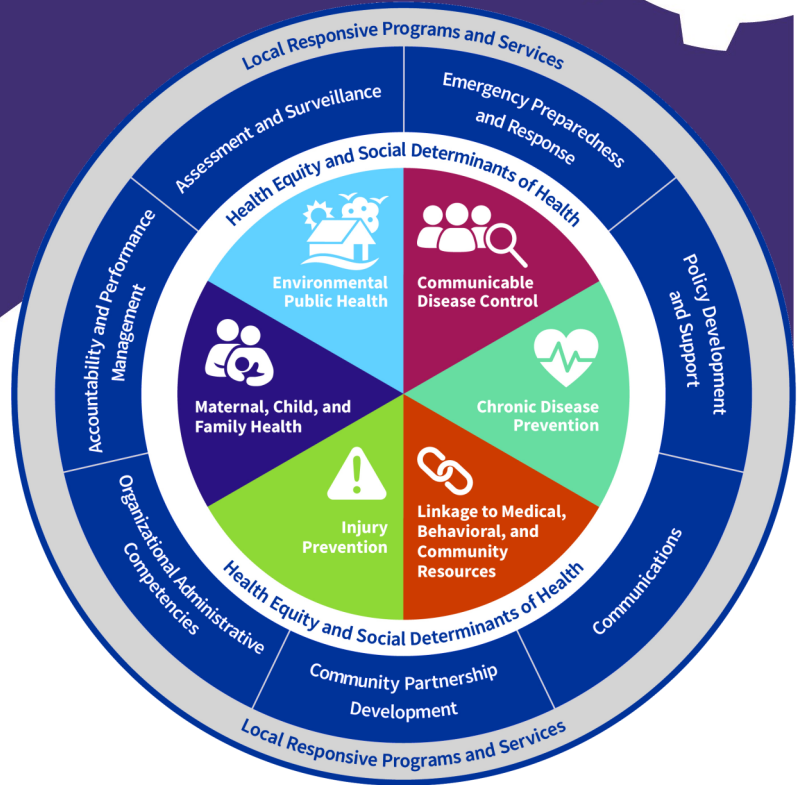


Health Equity and Social Determinants of Health

SPECS

Health Equity and Social Determinants of Health are called out as a separate component in Missouri’s Foundational Public Health Services model, but in practice they are integrated into all public health capabilities and areas of expertise.

Public health agencies must have the ability to work with partners to address health inequities and social determinants of health, to create an environment and policies that support conditions for optimal health for all people. Public health agencies should be able to analyze data to identify health inequities, make health equity a strategic priority, and apply evidence-based strategies and interventions to restore health equity in every Missouri community.



Foundational Capabilities

Foundational Areas

DISCUSSION

1. How do our current organizational practices and policies facilitate or inhibit us from advancing health equity?
2. What expectations and opportunities exist for staff to make health equity a part of daily work?
3. What operational changes are needed for our services to be more accessible and of better quality?
4. What new partnerships should we explore to pursue health equity?

APPLICATION

1. Identify root causes of health inequities in our community.
2. Develop strategies to promote health and equity in our community.
3. Establish new partnerships with residents of our community to build trust and increase engagement in change-making.

#HealthierMO is a grassroots initiative to transform Missouri’s public health system into a stronger, more sustainable, culturally relevant and responsive system that can offer every Missourian the fair opportunity for health. #HealthierMO is a project of the Missouri Public Health Association, with support from Missouri State University. Funding is provided by Missouri Foundation for Health and Health Forward Foundation.

RESOURCES

- Introduction to Equity, County Health Rankings and Roadmaps
- Identifying and Understanding Health Inequities, CDC
- Building Organizational Capacity to Advance Health Equity, CDC
- Guidelines for Achieving Health Equity in Public Health Practice, NACCHO
- Systems Change & Deep Equity, Change Elemental
- Race Equity and Inclusion Guide, Annie E. Casey Foundation